

Schedule 4 of the Road Traffic (Registration and Licensing of Vehicles)
Regulations (Cap. 374E)

Source: www.legislation.gov.hk

Chapter:	374E	Title:	Road Traffic (Registration and Licensing of Vehicles) Regulations	Gazette	E.R. 2 of 2012
				Number:	
Schedule:	4	Heading:	Provisions as to Display of Registration Marks and Plates	Version Date:	02/08/2012

[regulations 2, 8 & 12J]
(25 of 2005 s. 28)

1. Form of Display of Registration Marks

(a) Arrangement of Letters and Numerals

(i) The letters and numerals of a registration mark (not being a personalized registration mark) shall be displayed-

(A) in a single row, as shown in Diagram 1-

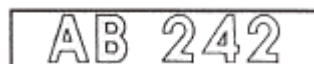


DIAGRAM 1;

or

(B) in 2 rows, with the letters in the upper row and the numerals in the lower row, as shown in Diagram 1A-



DIAGRAM 1A.

(ii) In the case of a personalized registration mark, subject to subparagraph (c), the letters and numerals shall be displayed-

(A) (if the certificate of allocation specifies the arrangement in a single row only) in a single row only, as shown in Diagram 2-

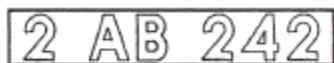


DIAGRAM 2;

or

(B) (if the certificate of allocation specifies the arrangement both in a single row and in 2 rows) either-

(I) in a single row, as shown in Diagram 2 above;

or

(II) in 2 rows, as shown in Diagram 2A-



DIAGRAM 2A.

(iii) If the letters and numerals of a personalized registration mark are displayed in 2 rows, the maximum number of letters and numerals in each row is 4 (counting a blank space as one letter or numeral).

(iv) In the case of a personalized registration mark displayed in 2 rows, any blank space which would, if not for this sub-subparagraph, appear on the right most side of the upper row or the left most side of the lower row shall, for the purpose of having the letters and numerals in the relevant row centred, be disregarded so that there is a margin of the same width on each side of the row.

(b) Form and Size of Letters and Numerals

(i) The letters and numerals of a registration mark for display shall comply with sub-subparagraph (ii) and with the form and proportions shown in Diagram 3-



DIAGRAM 3.

(ii) All letters and numerals in accordance with Diagram 1, 1A, 2, 2A or 3 shall be not less than 8 cm and not more than 11 cm high, except that- (25 of 2005 s. 28)

(A) in the case of an invalid carriage or a motor cycle, the letters and numerals shall be not less than 5 cm and not more than 11 cm high; or

(B) where written approval is given by the Commissioner for the letters or numerals to be less than 8 cm high, the letters or numerals shall be not less than the height so approved.

(c) Spacing of Letters and Numerals of Personalized Registration Marks

(i) Subject to sub-subparagraphs (ii) and (iii), each letter or numeral of a personalized registration mark for display shall be separated from the letter or numeral it immediately precedes or follows by a space, which shall be-

(A) in the case of an invalid carriage or a motor cycle, not less than 0.2 cm and not more than 2.5 cm wide (or, if there are 2 or more than 2 numerals "1", placed together side by side, in the arrangement of the letters and numerals, more than 0.8 cm but not more than 2.5

- cm wide); or
- (B) in the case of any other motor vehicle, not less than 1 cm and not more than 3.2 cm wide, and all such spaces separating the letters and numerals shall be of the same width.
- (ii) A blank space between any 2 letters or numerals, or between a letter and a numeral, of a personalized registration mark for display shall be-
- (A) in the case of an invalid carriage or a motor cycle, not less than 3.2 cm and not more than 4.2 cm wide; or
- (B) in the case of any other motor vehicle, not less than 5.5 cm and not more than 7 cm wide.
- (iii) The space referred to in sub-subparagraph (i) is not required between a letter and a blank space, or between a numeral and a blank space, of a personalized registration mark for display.
- (iv) For the purposes of sub-subparagraphs (i) to (iii), the width of a space or blank space between any 2 letters or numerals, or between a letter and a numeral, shall be measured horizontally between the vertical line passing through the right extreme edge of the letter or numeral immediately preceding the following letter or numeral and the vertical line passing through the left extreme edge of the following letter or numeral.
- (25 of 2005 s. 28)

2. Display of Registration Marks and Colours, Construction, Fitting and Illumination of Registration Marks

- (a) Except as prescribed in subparagraph (f), the registration mark shall be displayed on the front and on the back of a motor vehicle in a vertical position, so that every letter and numeral of the registration mark is vertical, and is easily distinguishable, in the case of the registration mark displayed on the front of the vehicle, from in front of the vehicle, and in the case of the registration mark displayed on the back of the vehicle, from behind the vehicle.
- (b) Subject to subparagraph (c), registration mark shall be displayed on a reflex-reflecting number plate, being a plate which complies with the requirements laid down by the British Standard Specification for Reflex-reflecting Number Plates published on 11 September 1972 under the number B.S. AU 145a and is of a type in respect of which there has been

issued by the Commissioner a certificate that a plate of that type complies with those requirements, and- (L.N. 391 of 1983)

- (i) the registration mark, where it is displayed on the front of a motor vehicle, shall be formed of black letters and numerals upon a white background and where it is displayed on the back of the vehicle shall be formed of black letters and numerals upon a yellow background;
- (ii) that part of the plate which comprises the said background shall be constructed of reflex-reflecting material which shall at all times be maintained in a clean and efficient condition;
- (iii) no reflex-reflecting material shall be applied to any part of the said letters or numerals; and
- (iv) there shall be legibly and permanently marked on the plate the specification number B.S. AU 145a to indicate that it complies with the British Standard mentioned above, and the name, trade mark or other means of identification of the manufacturer of the plate.

(c) Without prejudice to subparagraph (b) in the case of a double-decked bus that is designed to have a registration mark display on the back of the bus incorporated in the structure, with internal illumination, the registration mark displayed on the back of the bus may be formed of black letters and numerals indelibly inscribed upon a yellow surface and no letters, numerals or markings other than registration mark shall be inscribed on such surface. (L.N. 391 of 1983)

(d) The reflex-reflecting number plate shall be firmly fixed on to the motor vehicle.

(e) No letter or numeral of a registration mark shall be capable of being detached provided that it shall not be a contravention of this requirement if the letters or numerals are made separately and are either welded or firmly riveted to the surface of the number plate. If the letters and numerals are displayed on a flat plate, the plate may be constructed having raised letters and numerals.

(f) The registration mark shall not be displayed on the front of a motor cycle or trailer. In the case of an invalid carriage, the registration mark need not be displayed on the front of the invalid carriage where the Commissioner has exempted such invalid carriage, either in a particular case or by reference to a type of invalid carriage, from such requirement under subparagraph (a). (L.N. 262 of 1984)

(g) No letters, numerals or markings shall be displayed on a reflex-reflecting

number plate other than those required to be displayed or marked under these regulations.

(h) When a vehicle of any kind is attached to a mechanically propelled motor vehicle either in front or behind, the registration mark required to be displayed on the front or on the back of the mechanically propelled vehicle or a duplicate of such registration mark shall be displayed on the front or on the back of the vehicle attached, as the case may be, in the same manner as the registration mark is required to be displayed upon the motor vehicle drawing or propelling the same.

(i) Whenever a motor vehicle is in motion upon a road during the hours of darkness or in poor visibility conditions (as defined in regulation 2 of the Road Traffic (Traffic Control) Regulations (Cap 374 sub. leg. G)) a lamp shall be kept illuminated upon the motor vehicle so contrived as to illuminate by means of reflection or otherwise and to render easily distinguishable from any point not more than 15.25 m behind the motor vehicle every letter and numeral of the registration mark displayed on the back of the motor vehicle or on the vehicle attached to the back of the motor vehicle, as the case may be.

(j) In this paragraph, ***reflex-reflecting number plate***(反光字牌) means a flat rectangular plate displaying the registration mark of a motor vehicle in which the background to the registration mark consists of reflex-reflecting material, integrally attached to a suitable backing material.

(25 of 2005 s. 28)

(Format changes—E.R. 2 of 2012)